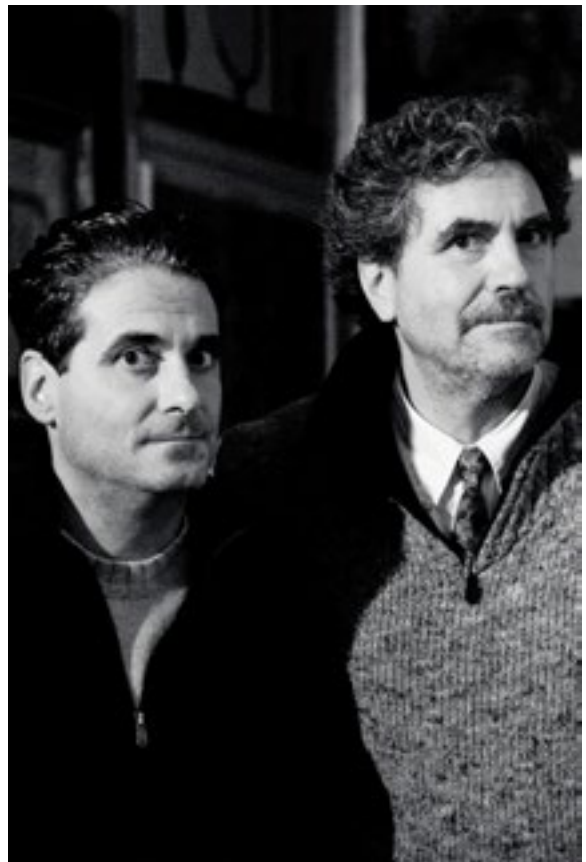


Fresco Paintings

Roberto (architect) and Rodolfo (maestro d'arte) are born in Florence respectively in 1956 and 1963. Guarnieri's family workshop was established in 1944. The four-hands work is inspired by the "the florentine workshops of the Renaissance". All the fresco paintings are on wood panels.

One-man-shows:

Villa La Massa Candeli, Firenze 2015
Torre Alberghieri, Greve 2010/2016
Castello Banfi, Montalcino 2015
Regency Hotel, Firenze 2006/2014
Casa Romeo, Francavilla Marittima 2014
Castello del Nero, Tavarnelle Val di Pesa 2011
Barbi Hansen House, Trier Germany 2010
Scuderie Borboniche, Camaiore 2009
Four Season, Hotel Firenze 2009
Villa Agostini Della Seta, Corliano Pisa Maggio 2009
Roundhouse, Wancouver, Canada Aprile 2008
Hotel Imperiale, Forte dei Marmi 2007
Villa San Michele, Fiesole 2007
Biennale of art Sharg iah, Dubai Emirati Arabi 2007
Hotel Imperiale, Forte dei Marmi 2007
Sovcomflot, Mosca 2007
Whestin Hexcelsior, Firenze 2006
Helvetia e Bristol, Firenze 2006
Palazzo Orsini, Bomarzo Viterbo 2006
Factory Bressaglia, Basharage Lussemburgo 2005
Caffè Carlot, Le Focette 2004
Villa La Massa Candeli, Firenze 2004
Palazzo Pretorio Certaldo, 2004
Convitto della Calza, Florence 2001
Gelateria Porta Romana, Florence 2001
Gift Fortezza da Basso, Florence 2001
Villa la Montagnola, Greve 2000



www.iguarnieri.co
50125 Firenze, Lungarno Benvenuto Cellini 39
iguarnieri@iguarnieri.it
Roberto +39 333 8348277
Rodolfo +39 335 6129907

iguarnieri



Duomo in Azzurro 2016 cm 84 x 61

Dome in Light Blue 2016 inch 33 x 24

Our paintings are in private and public collections in Italy and all around the world:

Abu Dhabi City AE, Andover MA, Alpharetta GA, Al Ahmadi, KUO, Amsterdam, NED, Asheville NC, Atherton CA , Atlanta GA, Berkeley CA , Beverly Hills CA, Blandford MA, Bonneuil FR, Boston MA, Boulogne FR, Bronxville NY, Bruxelles BE, Calabasas CA, Calgary CA, Cancun ME, Carmel CA, Chennai IN, Cincinnati OH, Clayfield AUS, Collonge-Belrive CH, Cologny CH, Colorado Springs CO, Cremorne AU, Doha QA, Edmont UK, El Paso TX, Les Suves FR, Euerberg DE, Freiburg DE, Fort Worth TX, Glen Iris AU, Gloucestershire UK, Greenville SC, Greenwich UK, Guildford AU, Hallandale FL, Hamburg DE, Hamilton CA, HAMilton TX, Heerlen NL, Hoboken NJ, Hong Kong HK, Houston TX, Irvine CA, ITALY, Jarlasa SE, Jersey City NJ, Kennenbunkport ME, Laguna Beach CA, Lake Ridge VA, Lexington KY, Ljungsarp SE, London UK, Los Angeles CA, Louisville KY, Malaga ES, Malibu CA, Mamaroneck NY, Melbourne AU, Metairie LA, Miami FL, Mill Valley CA, Milwaukee WI, Morgantown WV, Montreal CA, Moscow RU, Munich GER, Naples FL, Nashville TN, Needham MA, New Delhi IN, New Haven CT, Newport Coast, CA, New York NY, Newtown CT, North Venice FL, Oklahoma City OK, Paris FR, Pembroke FL, Peoria IL, Phoenix AZ, Port Harcourt NGR, Richmond VA, Salt Lake City UT, Saint Davis UK, San Francisco CA, San Juan PR, Sausalito CA, St. Petersburg RU, Seattle WA, Shanghai CHN, Sidney AU, Southport UK, St. Maxime FR, Stafford UK, Sterling VA, Stockholm SW, Sugar Land TX, Tampa FL, Tel Aviv IL, Tokio IP, Tomball TX, Toorak AU, Toronto CA, Trier DE, Tucson AZ, Vancouver CA, Victoria AU, Warren MI, Washington DC, Winchester UK,



Arcobaleno 2015 cm 160 x 220

Rainbow 2015 inch 63 x 86



Natura 2015 cm 160 x 200

Nature 2015 Inch 63 x 86



IV STATO 2015 cm 160 x 200

IV STATO 2015 Inch 63 x 86



Colline Toscane 2015 cm 160 x 200

Tuscany Hills 2015 Inch 63 x 86

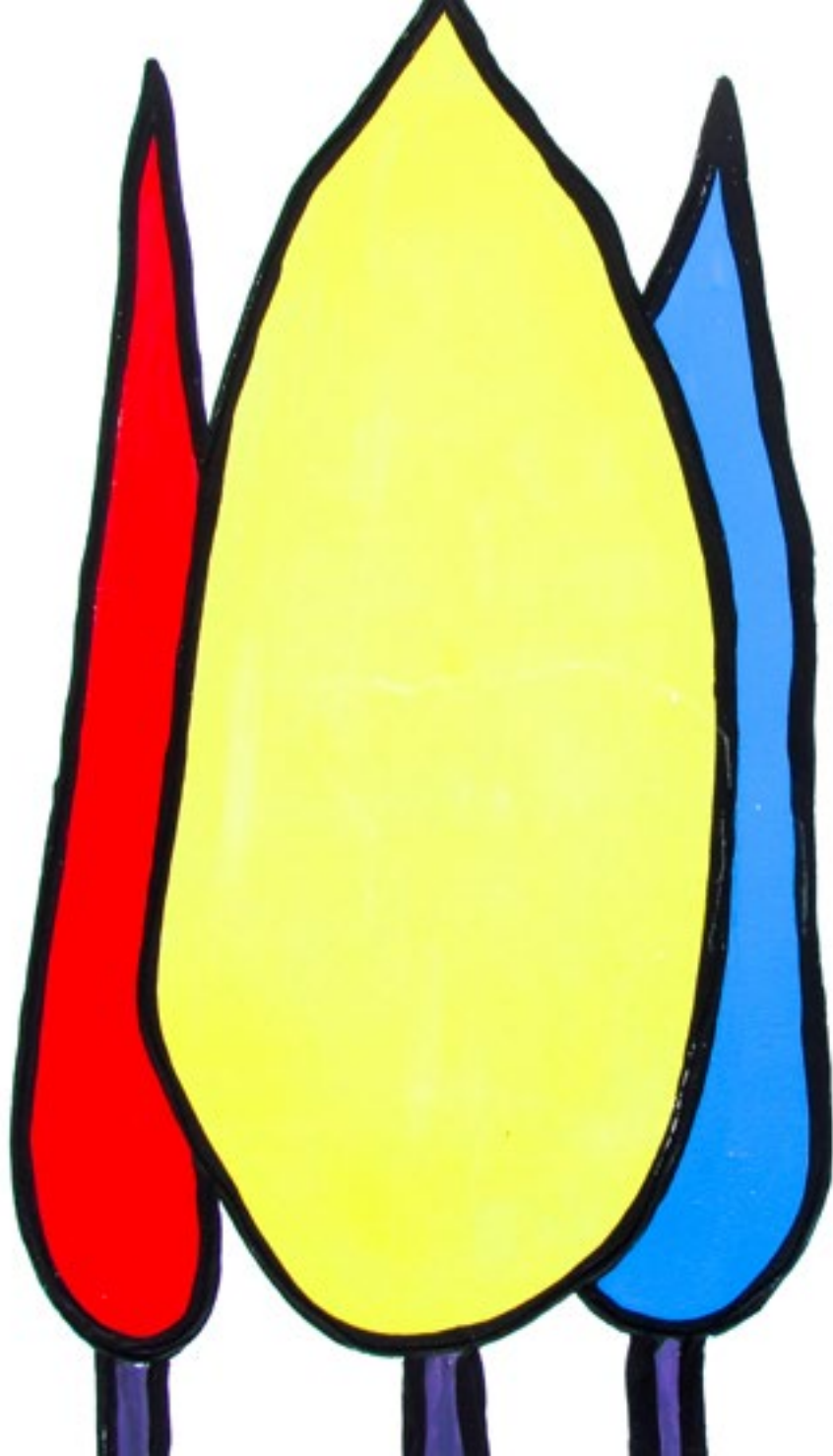


Fiorellini II 2014 cm 125 x 180

Flowers II 2014 inch 49 x 70

Fiorellini Rose 2015 cm 160 x 220

Flowers in Pink 2015 inch 63 x 83w



Paesaggio colorato 2014 cm 110x120
Colored Landscape 2014 inch 43 x 55



Paesaggio Chiaro 2015 cm 60 x 80 /



Campagna e Papaveri 2015 cm 61 x 84 |
 24 x 33 inch



Bigallo Colorato 2016 cm 32 x 38 |
 12 x15 inch



Buongoverno Siena Colorato 2016
 cm 38 x 47 | 15 x 18 inch



Papaveri 2014 cm 80 x 125

Poppies 2014 inch 31 x 49



Casa, Cipresso, Vigna 2015 cm 89 x 80

House, Cypress, Vineyard 2015 cm 23 x 31



Campagna 2016 cm 90 x 187

Countryside 2016 inch 35 x 73



Prato fiorito 2014 cm 125 x 250

Flowery Meadow 2014 inch 50 x 100



Girasole 2014 cm 125 x 250

Girasole 2014 cm 125 x 250



Prato Papaveri e Fiorellini 2015 cm 90 x 180

Poppies and Flowers Meadow inch 35 x 73



Fiori 2014 cm 125 x 250

Flowers 2014 inch 49 x 98



Girasole di Notte 2015 cm 93 x 161
Sunfloers at Night 2015 inch 36 x 63



Foresta Gialla 2015 cm 93 x 162
Yellow Forest 2015 inch 36 x 63



Giorno di Sole 2015 cm 93 x 161
Sunny Day 2015 inch 36 x 63



Papavero 2015 cm 93 x 161
Poppy 2015 inch 36 x 63



Prato Rosso 2014 cm 125 x 250

Red Grass 2014 inch 49 x 98



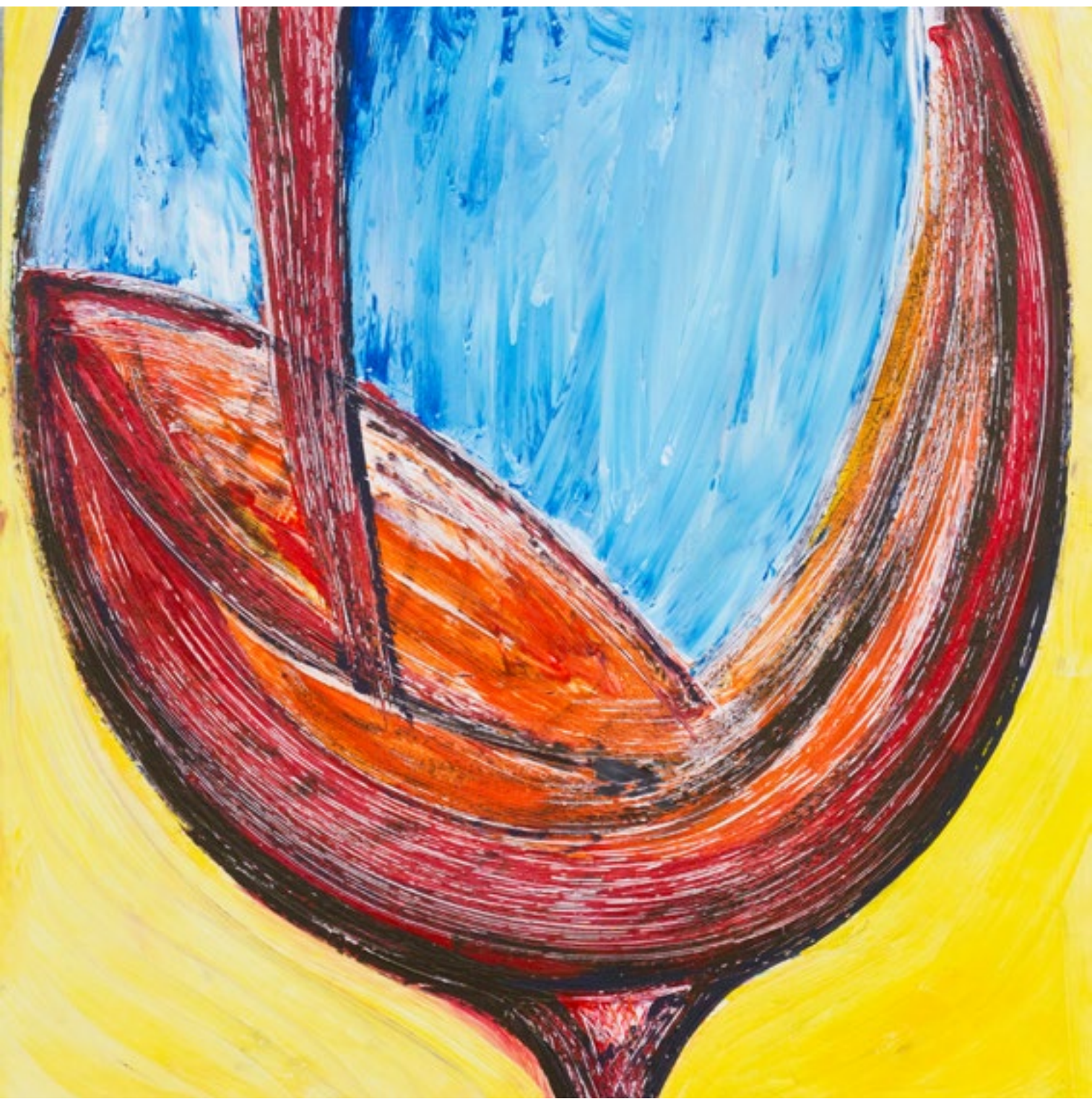
Danza di Apollo con le Muse 2015 cm 80 x 170

Dance of Apollo with the Muses 2015 cm 80 x 170



Calici 2012 cm 187 x 184

Glasses 2012 inch 73 x 72



Calice in Giallo 2014 cm 125 x 125

Glass in Yellow 2014 inch 49 x 49



Regata in Blu 2015 cm 61 x 27
Regatta in Blue 2015 inch 24 x 10



Regata Torre del Lago 2015 cm 215 x 53
Regatta Lake Tower 2015 inch 84 x 20



Regata in Giallo 2015 cm 80 x 140
Regatta in Yellow 2015 inch 31 x 55



Belle Vele 2015 cm 50 x 35/ 16 x 14 inch



Vela Arancione 2015 cm 35 x 50 /
 13 x 19 inch



Oceano 2014 cm 125 x 250

Ocean 2014 inch 49 x 98



Vela Rosa 2015 cm 50 x 43

Pink Sail 2015 inch 19 x 16



Forte dei Marmi 2014 cm 80 x 125

Marble Fort 2014 inch 49 x 70



Mare Gennaio 2015 cm 80 x 140

Sea January 2015 inch 31 x 55



Siena Buongoverno 2015 cm 100 x 180

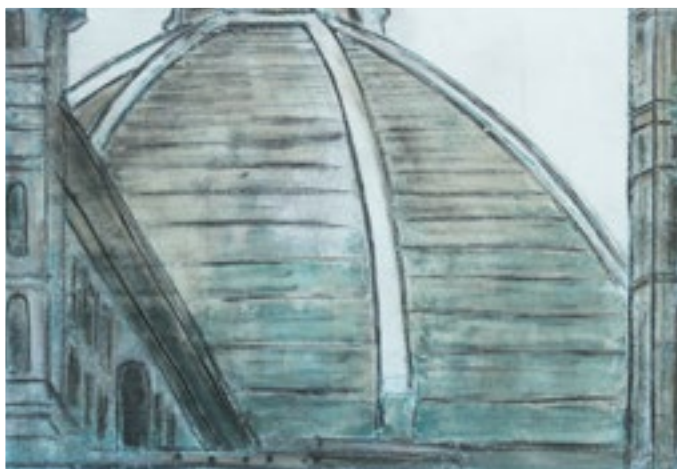
Siena Good Government 2015 inch 39 x 70

iguarnieri

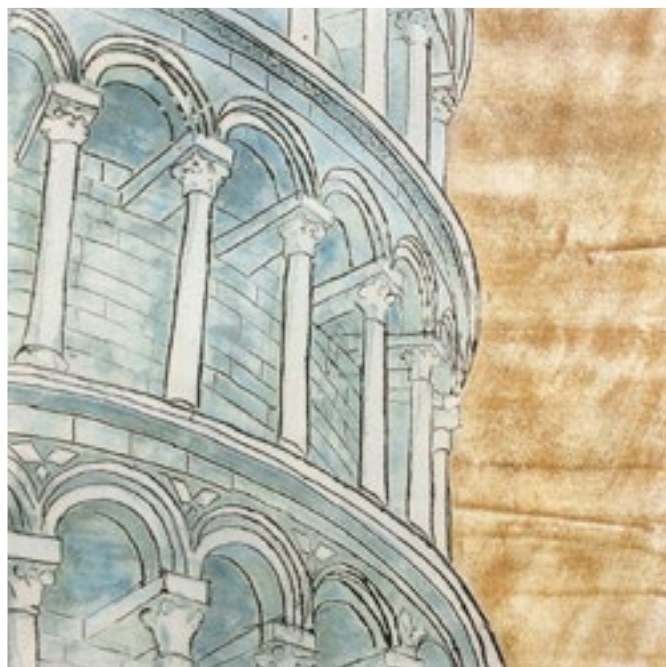
44

iguarnieri

45



Firenze Vista Cupola 2015
cm 80 x 110 | inch 31 x 43



Pisa Torre 2015 cm 90 x 90 | inch 35 x 35



Camogli 2015 cm 90 x 90 | inch 35 x 35



Duomo Milano 2015 cm 90 x 106 | inch 35 x 41



Buongoverno Contemporaneo 2016 cm 169 x 169

Goodgovernment Contemporary 2016 inch 66 x 66



David verde 2011 cm 85 x 65 | inch 33 x 25



Uffizi Grande 2012 cm 90 x 150 | inch 35 x 59



Ponte vecchio al tramonto 2015 cm 80 x 180

Old Bridge at Sunset 2015 cm 31 x 55



Filippo e Arnolfo 2014 cm 80 x 200

Philip and Arnolfo 2014 cm 80 x 200



Primavera Botticelli 2015 cm 80 x 200

iguarnieri

52

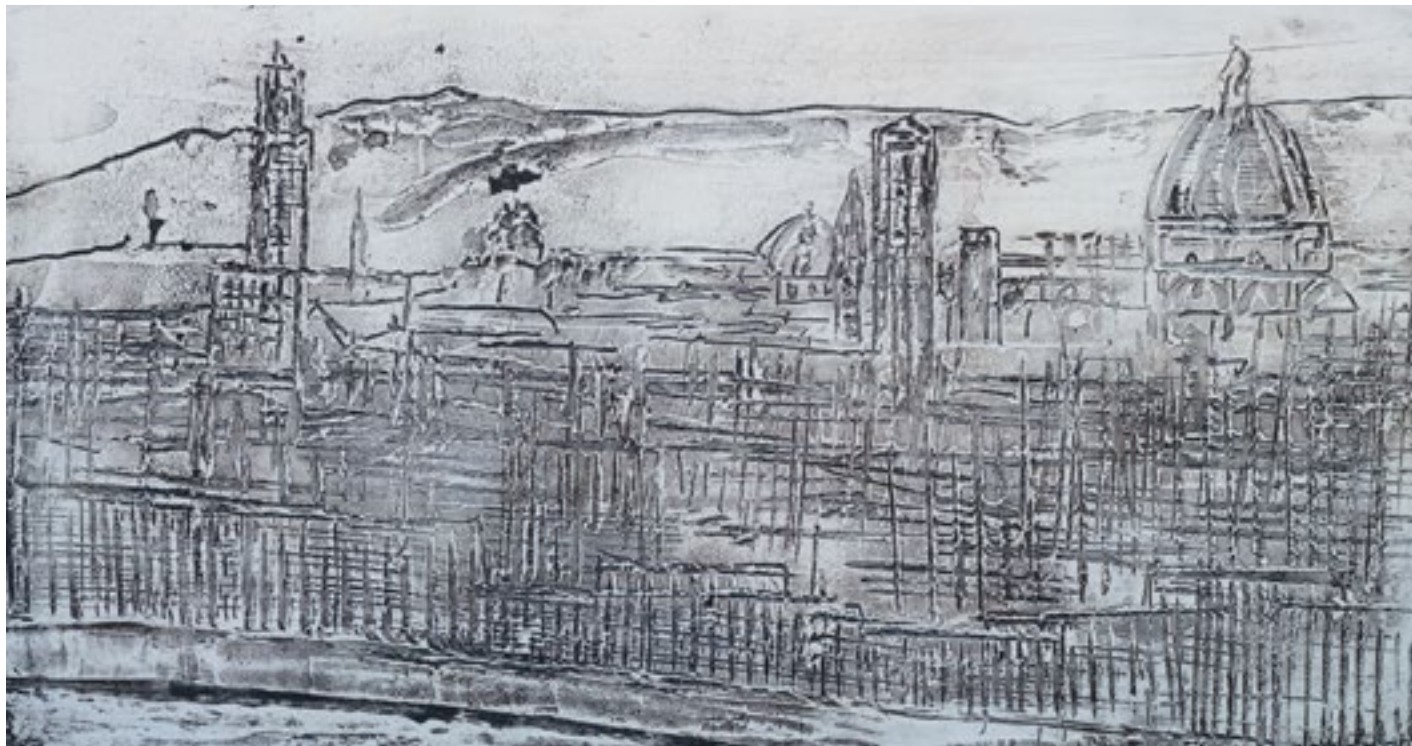
Botticelli's Spring 2015 inch 39 x 6

iguarnieri

53



Firenze Monumenti 2016 cm 144 x 81 | inch 56 x 31



Firenze Panorama 2016 cm 144 x 81 | inch 56 x 31



Venere Volto Dolce 2016 cm 81x144|inch31 x56



Flora Romana 2016 cm 81x144|inch31 x56



San Galgano 2015 cm 60 x 80
inch 23 x 31



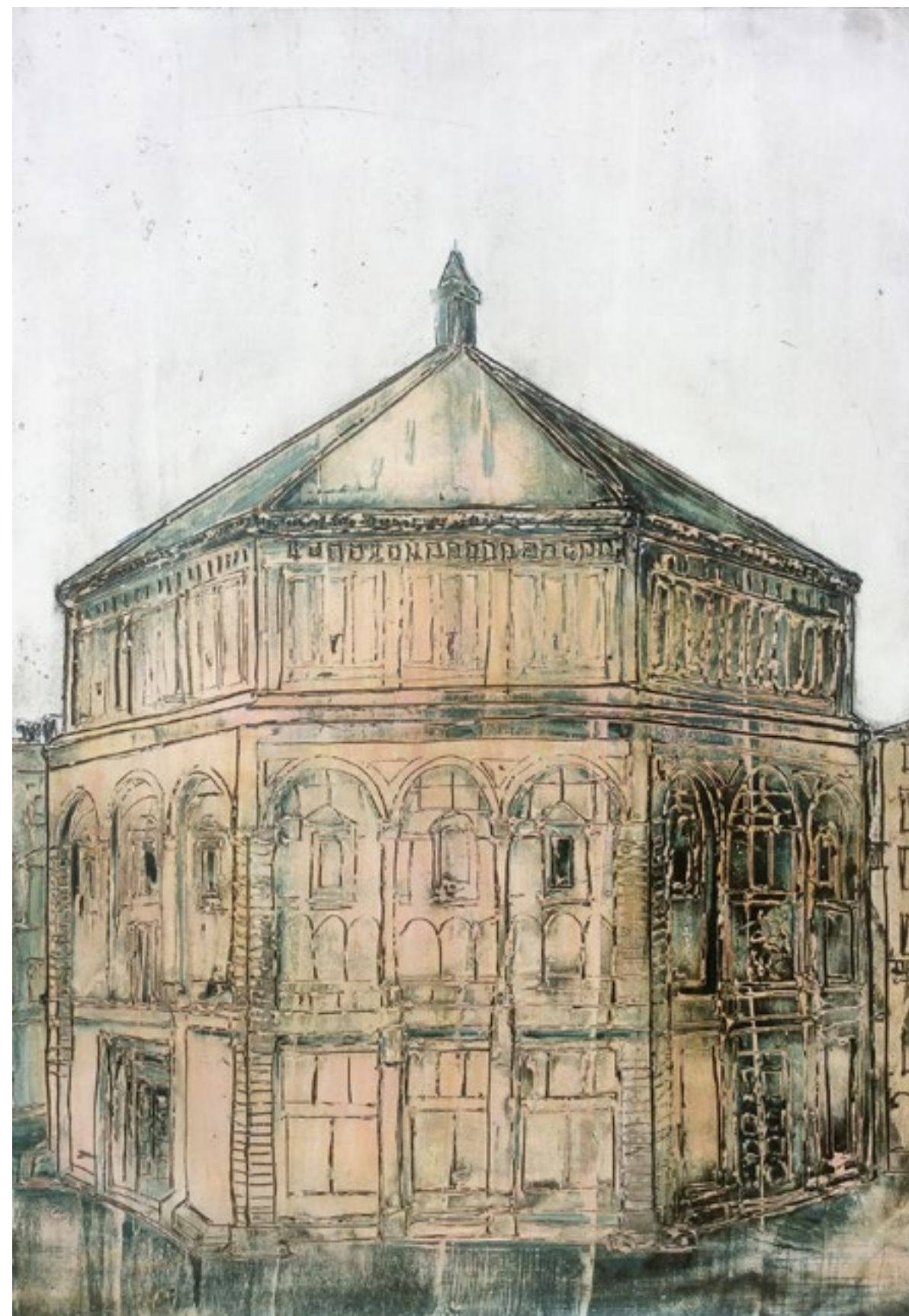
San Gimignano blu 2015 cm 60 x 80
inch 23 x 31



Cipressi rosa 2015 cm 80 x 110
inch 31 x 43



Cipressi grigi 2015 cm 60 x 80
inch 23 x 31



Battistero Firenze grande 2015 cm 106 x 126
Baptistery Florence big 2015 inch 41 x 49



New York Landscape 2016 cm 215 x 80 | inch 85 x 31



Fiori D'Arancio 2015 cm 94 x 162
Orange Flowers 2015 inch 37 x 63



Mazzolino 2015 cm 90 x 187
Bouquet 2015 inch 35 x 73



Papaveri Blu 2015 cm 90 x 187
Poppies in Blue 2015 inch 35 x 73



I Profughi 2016 cm 93 x 161

Refugees 2016 inch 36 x 63



Campagna grande 2014 cm 125 x 250 | inch 49 x 98



Settignano 2013 cm 84 x 184 | inch 33 x 72



Cavalli bianchi 2015 cm 90 x 90

White Horses 2015 inch 35 x 35



Battaglia 2014 cm 110 x 180 | **Battle** inch 43 x 70



San Romano 2014 cm 84 x 184 | inch 33 x 72



Battaglia Paolo Uccello 2014 cm 80 x 140 | inch 31 x 55



Buongoverno campagna 2014 cm 84 x 184 | inch 33 x 72



Guidoriccio 2013 cm 60 x 80 | inch 23 x 31



Nudo in bianco 2013 cm 83 x 184

Nude in White 2013 inch 33 x 72



Nudo nero 2010 cm 77 x 183 | inch 30 x 72



Nudo sul letto viola 2010 cm 84 x 124 | inch 33 x 48



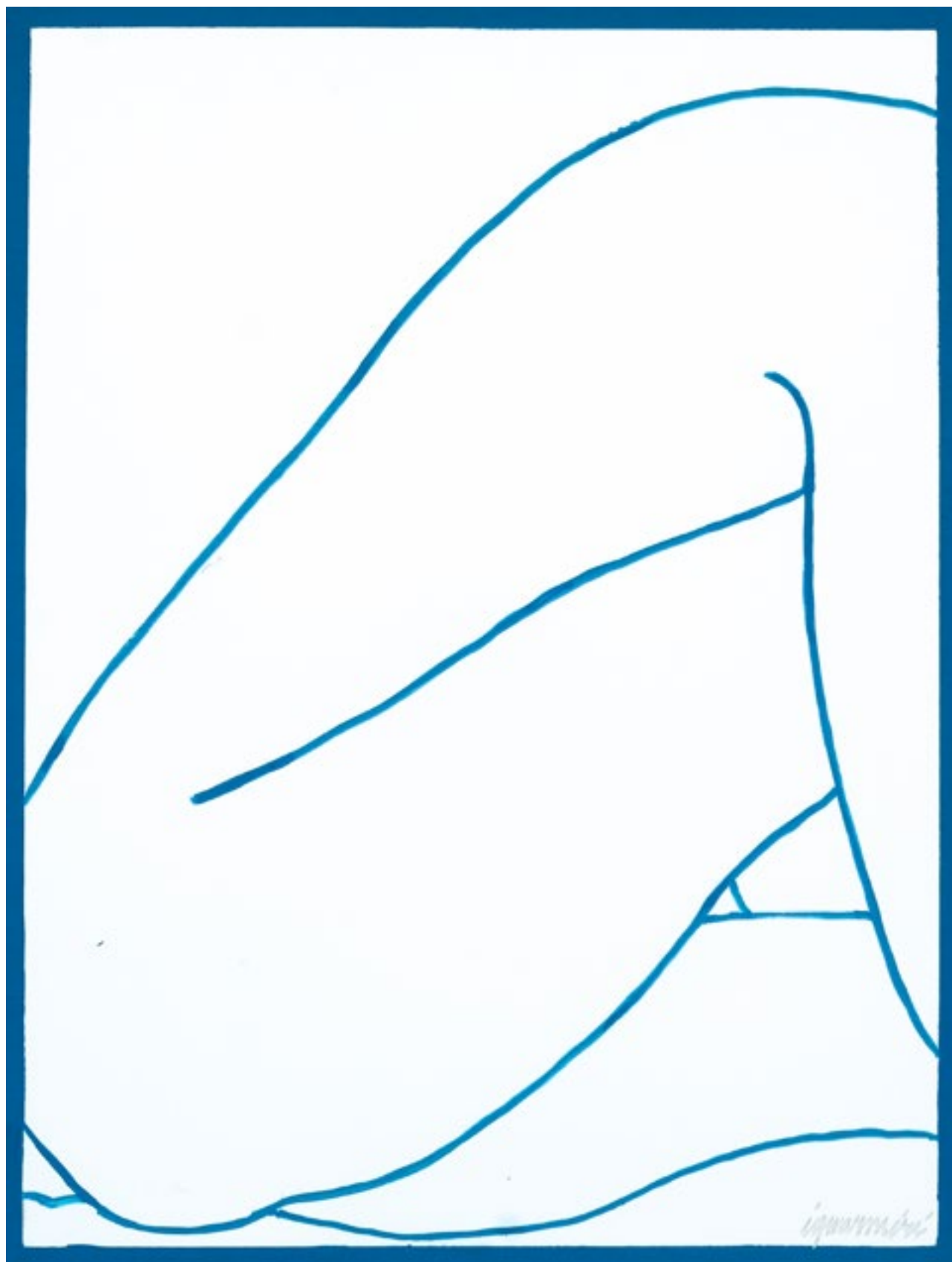
Nudo La Mora 2012 cm 185 x 126 | inch 50 x 73

iguarnieri

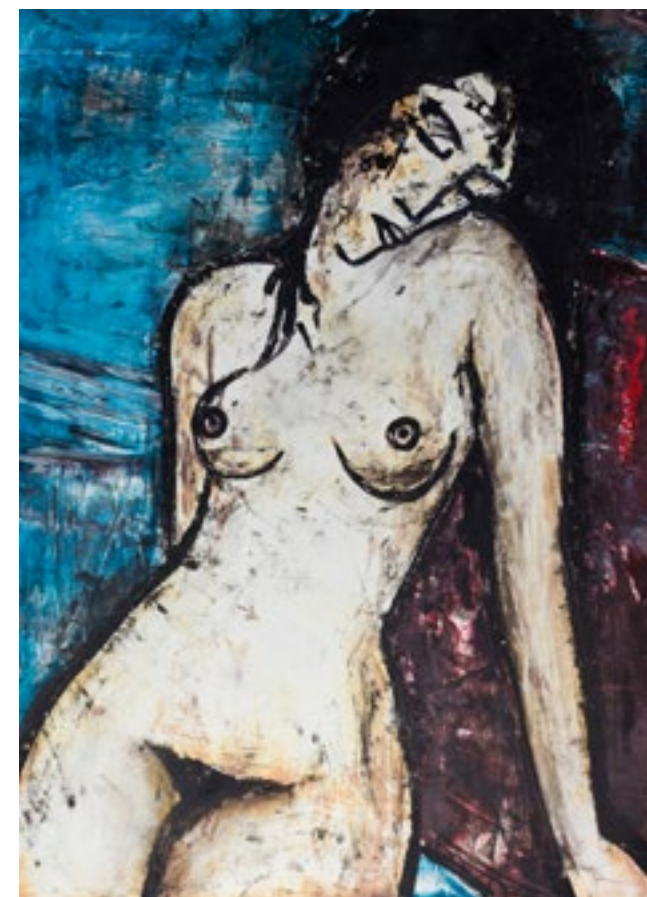


Nudo sul letto blu 2014 cm 75 x 200 | inch 29 x 78

iguarnieri



Nudo Ciao Matisse 2015 cm 70 x 90 | inch 27 x 35



Nudo da Modi 2013 cm 64x94 | inch 25x37



Nudo Blu 2014 cm 58 x 79 | inch 22 x 31



Nudo Bordo 2011 cm 102 x 187 | inch 40 x 73



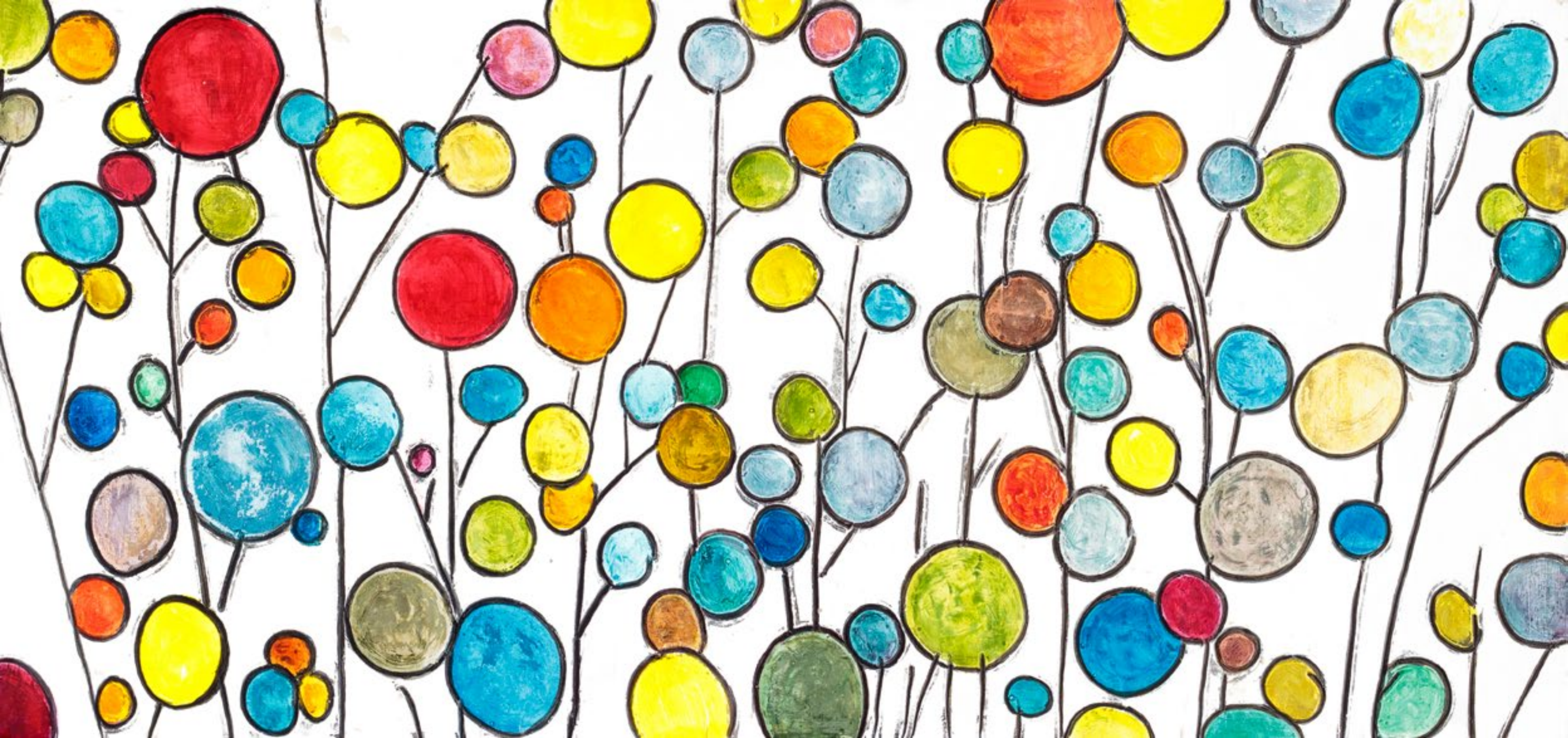
Nudo in Arancio 2016 cm 84 x 124

Nude in Orange 2016 inch 33 x 49



Venere Botticelli 2016 cm 84 x 124

Botticelli Venus 2016 inch 33 x 49



Fiori di Salice 2016 cm 80 x 169

Willow Flowers 2016 inch 31 x 66

Once upon a time there was a Prince.

However, we are not writing a fairytale here. This is, on the contrary, a semi-scientific account of a phenomenon that traversed Florentine art from the Middle Ages and throughout the Renaissance, giving birth to an outburst of creativity that for both quantity and quality has no equal in the world. An experience which enlightened, contemporary painters such as Roberto and Rodolfo Guarnieri can bring back to life. And with horizons which stretch far further than the city of Florence itself. You don't have to go far to see them and to breathe the very atmosphere in which they were created. Your author had merely had to look in at the Guarnieri workshop at Lungarno Cellini 39. But let's go a step at a time.

The great artists of past centuries worked within a society in which the links, whether of content, form, religion or power, were greater by far than they are today. Yet they created deathless works without which the whole upheaval of the 19th century onwards, thanks – but not only – to revolution of Romanticism, would never have happened.

Let us call to mind that inspired 1974 monologue of Gaber-Lupoirini on “Giotto da Bondone”. In fact we'll even read a fragment or two: “I am watching him drawing on rocks [...]. And he thinks [...] of the possibility of painting a sky different from the one so far depicted. Of renewing everything. And as we all know these are things we can only do by using our logic and reason [...]. As we know, in the pictures of those days the sky was always painted gold: fine gold, fixed and implacable! This didn't seem right to Giotto, and here began his struggle. He studied the malleability of gold in order to modify it, to change it, then he attempted a sky... and it turned out all gold. He studied the chemistry, the possible stratifications... a slightly lighter shade, a slightly darker one, but it was always gold! He realized that chemistry was not the way to solve his problem [...]. Then he cast a glance at the sky and exclaimed: “Why, to me it looks blue... Heavens alive, the sky is blue!”

It was a revolution. Like the one brought about by Galileo in 1632 with his “Dialogue Concerning the Two Chief World Systems”.

The Florentine painters of the Middle Ages and Renaissance (and beyond) thus acquired a technical, wide-ranging creative capacity without equal, and created the open-air museum which is the city of Florence. Paintings, frescoes, portraits, scenes of religious and civil life; palaces, churches, and the walls and houses of the city of the fleur-de-lys became immersed in beauty.

The prince (nobleman, cardinal, or prosperous merchant) commissioned works of art, paid for them and freed the artist from mundane worries. The artist cashed in, and paid him back by creating the masterpieces we know. A relationship which, in its different way, we find on this level perhaps only in the world of the cinema. Yet much of contemporary architecture and town planning would

benefit from a return to this salutary type of patronage. Glass and metals, marbles and King Kong size structures are not sufficient for human welfare, be it at the level of the family, the public building or the workplace.

Hence, to return to our opening statements, the artistic proposal put forward by Roberto and Rodolfo Guarnieri, two Florentine masters whose works are displayed or else created the world over. We need only make an effort to look at them as if superimposing our eyes on theirs. Their eyes are such as scrutinize a kind of art that in Florence itself fails to move forward, eyes that receive the signals conveyed to them by the Earth, of new enlightened ‘princes’ who aspire to give the substance of beauty to the great open spaces of the architecture of the 20th century and the Third Millennium, perhaps by embodying some idea harboured in their personal empyrean in a fresco or cycle of frescoes which, by being represented, may seem endowed with eternity. Or nearly. The new dreams of a new era.

Yes, a tour of their workshop is quite enough to show you that Roberto and Rodolfo Guarnieri possess all the technical means, the artistic culture and the refined, comprehensive taste of the artists of the Middle Ages and the Renaissance; and that they have already how, combining their creativity with the fantasies and resources of some new patron, they can compensate for the architectonic nihilism that often rules the roost. And above all it will suffice to make you want to see more and know more about it.

Theirs is not a mere contract. It is also a contract, but of the sort which combines the forces of different minds and, in the bond designedly created by the pact between the new prince and the artist, bring about a new aesthetic culture of cities, public buildings, offices, museums, stadiums, hospitals, and all those places which people, entering them to work, to live, to receive treatment or to enjoy recreation, can breathe the air of their own humanity, or take in even a part of that of others, thanks to the work of the Guarnieri brothers. From their corner of Florence, this warm workshop full of colours, imagination, picture frames, smells and unconventional ways of viewing reality, we have looked over the threshold of a new humanism.

Enrico Zoi



Bigallo Inciso 2015

cm 160 x 200

Bigallo Engraved 2015

cm 160 x 200